



# GLAMPING

## TENTS



# Baytex Glamping Tents

## Company Overview

Baytex is a leading international designer and manufacturer of Marquees, Alloy-framed Structures, Fabric Architecture, Canopies, Tents and Lining Systems. With over 40 years of world-wide experience, Baytex has built a reputation for quality, simplicity and design innovation. Baytex is held in high regard for our:

- range of premium quality products
- ease and speed of installation
- simplicity, performance and design
- commitment to after-sales service and support

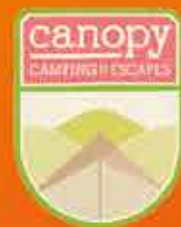


## The Baytex Glamping Story

In 2012 Baytex were approached by two budding entrepreneurs about the idea of glamping and the concept for their Canopy Camping Business and subsequently contracted to design and manufacture their first ever glamping tent. Since then this relationship has blossomed, as has the number of Canopy Campsites available and Glamping Tents required to service these sites...

Through working closely with Canopy Camping Escapes and listening to the needs of their clients, as well as drawing from our vast experience in the Tent Industry, Baytex has been able to design, develop, refine and manufacture 5 Models of Glamping Tent for the Canopy Camping Escapes Brand:

- The 'Canopy Deluxe' Glamping Tent
- The 'Canopy Lite' Glamping Tent
- The 'Canopy Pole' Glamping Tent
- The 'Canopy Sleeper' Glamping Tent
- The 'Canopy Pup' Glamping Tent



These 5 models are all based around the design of the original Glamping Tent, ALL utilising the off-white poly/cotton (65/35) fire retardant canvas, an Australian made fabric produced especially for Baytex Glamping Tents and believed to be the only polycotton fabric on the market with a FR Rating.

As well as offering these 5 standard models, Baytex is fully equipped to accommodate customised and unique designs using a wide range of materials for a wide range of conditions.



# GALLERY



• *Simplicity* • *Performance* • *Style*



# Canopy Deluxe

Introducing the Canopy Deluxe Glamping Tent, our most popular design. The Canopy Deluxe is a luxury 4m x 6m canvas, 'rustic' timber-framed tent and 4m x 8m embossed PVC fly with a timber deck.

The Canopy Deluxe is a bag-over style tent that features all-in-one roof and walls with an optional attached internal divider to define the bedroom space. Some of the key design features are the minimised guying at the front outdoor space, the solar view mesh windows with internal zipped canvas, protective canvas rub straps where fabric sits on framing and PVC patches at load points and cut outs.

## Specifications

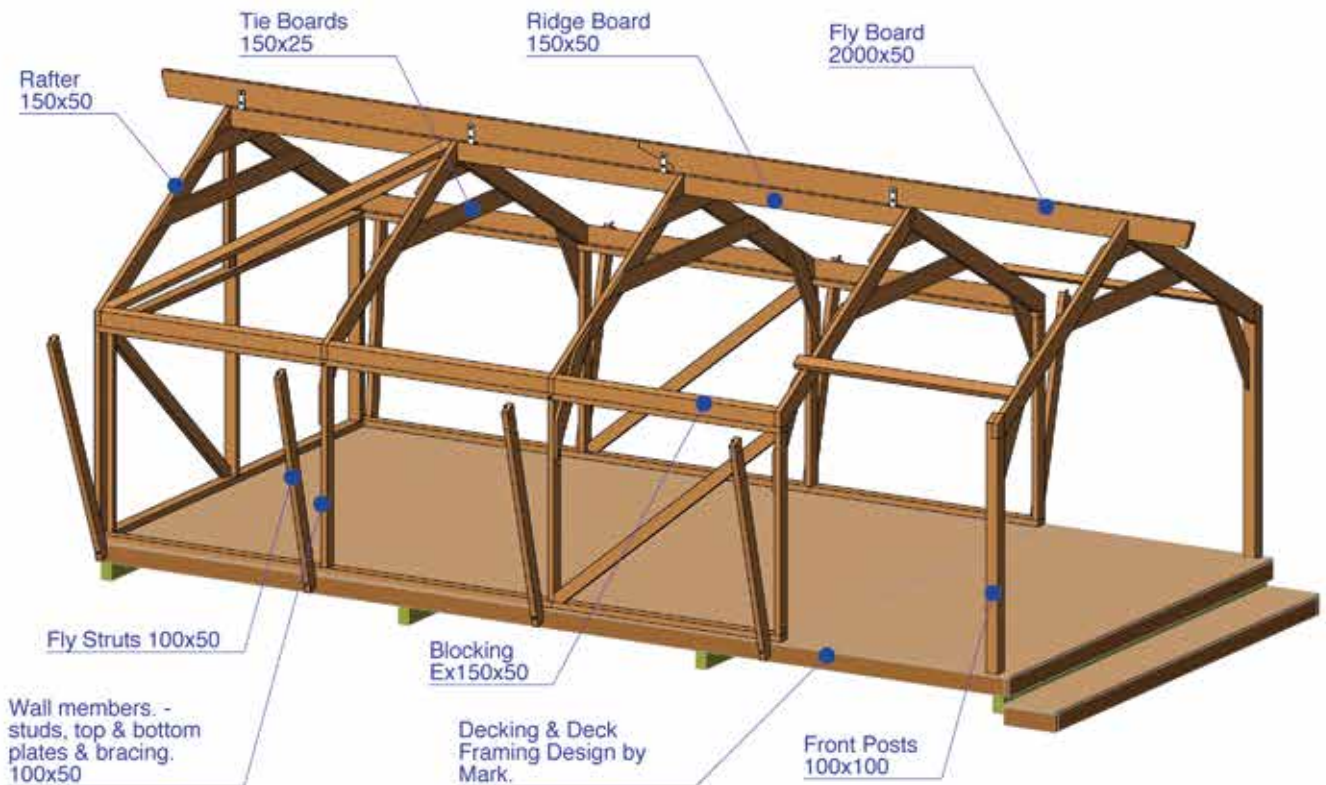
Size	Tent: 4m x 6m Deck: 4m x 8m
Materials	Tent: Canvas - DX12 Dynaproofed: 505g/sqm (14.9 oz) Fire Retardant Windows: PVC Mesh Weather Hex Outdoor Fly: Ferrari Stamoid 6002-10387 Off-White PVC Polystar PVC Beige - Fire Retardant
FR Certificates	Glamping tent fabrics have been tested to AS 1530: Pt 2 & Pt 3 by an independent testing laboratory and comply with the requirements of NZ Building Code C3: AS1 as a Flame Retardant Fabric
Warranty	Manufacturers: 2 years on workmanship Canvas Fabric: 5 years manufacturers pro rata warranty Fly: 5 years manufacturers pro rata warranty
Maintenance	Washing of canvas and PVC annually Reproofing of canvas biannually
Supplied	<ul style="list-style-type: none"><li>• Fabric: Main Tent (Canvas), Fly (PVC)</li><li>• Guy Straps • Earth Anchors • Tent Fasteners</li><li>• Building Plans for Timber Frame &amp; Deck Construction</li></ul>
Optional Extras	<ul style="list-style-type: none"><li>• Fireplace with Heat Shield and Weather Flashings</li><li>• Insulated Main Tent</li><li>• Drop-down 'clear' Verandah Wind-Break Screens</li></ul>





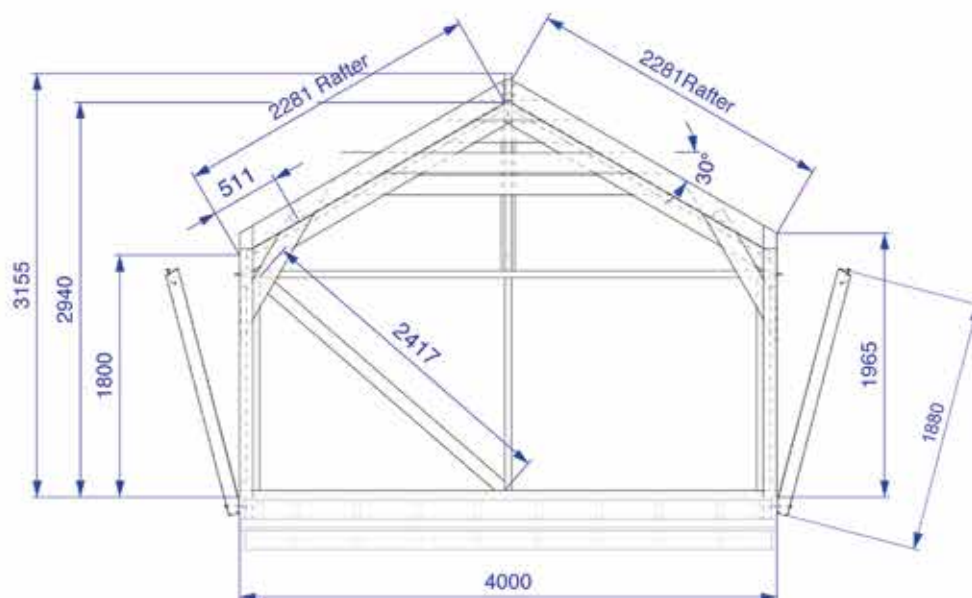


# Perspective & Elevation



**C Timber Frame View**

3/8



**D Front View**

3/8 Plan View

# Price Guide

Prices as of November 2018

## Canopy Deluxe

### Fabric:

- Main Tent (Canvas)
- Fly (PVC)
- Guying Straps & Earth Anchors
- Tent Fasteners
- Building Plans for Frame & Deck
- Mesh Screen in Front Wall

\$8923 + GST

### Size: 12m x 12m

Fireplace: see page 21 for options

### Insulation:

- Insulated Main Tent

POA

### Front Walling (3 Sides):

- Clear PVC

\$2054 + GST

### Installation:

- Customer is required to build the Tent Frame and Deck (See Builder Labour Hours below)

POA

## Materials Budgets (estimates only - supplier dependent):

### Tent Frame

- Macrocarpa

\$1250 + GST

Or

- DS4 Pine

\$1,000 + GST

### Deck

- Treated Pine Substructure & Pine Decking Top

\$3,000 + GST

Or

- Treated Pine Substructure & Kwila Decking Top

\$5,500 + GST

## Builder Labour Hours (approx. 1 week with 2 people):

Timber Tent Frame (2 People) - 2 days

Timber Deck (2 People) - 2 days

Tent Installation (2 People) - 1 day



# Canopy Lite

The Canopy Lite Glamping Tent is a 3.5m x 4.5m canvas, alloy-framed tent and 3.5m x 6m canvas fly with optional timber decking or 'built-in' ground sheet.

The Canopy Lite features an all-in-one roof and walls supported by an external alloy framework. It is slightly smaller than the Canopy Deluxe / Pole models and is designed as a more readily transportable option. Some of the key design features are the minimised guying at the front outdoor space, the solar view mesh windows with internal zipped canvas, protective canvas rub pockets and straps where the fabric connects to the framing and PVC patches at load points.

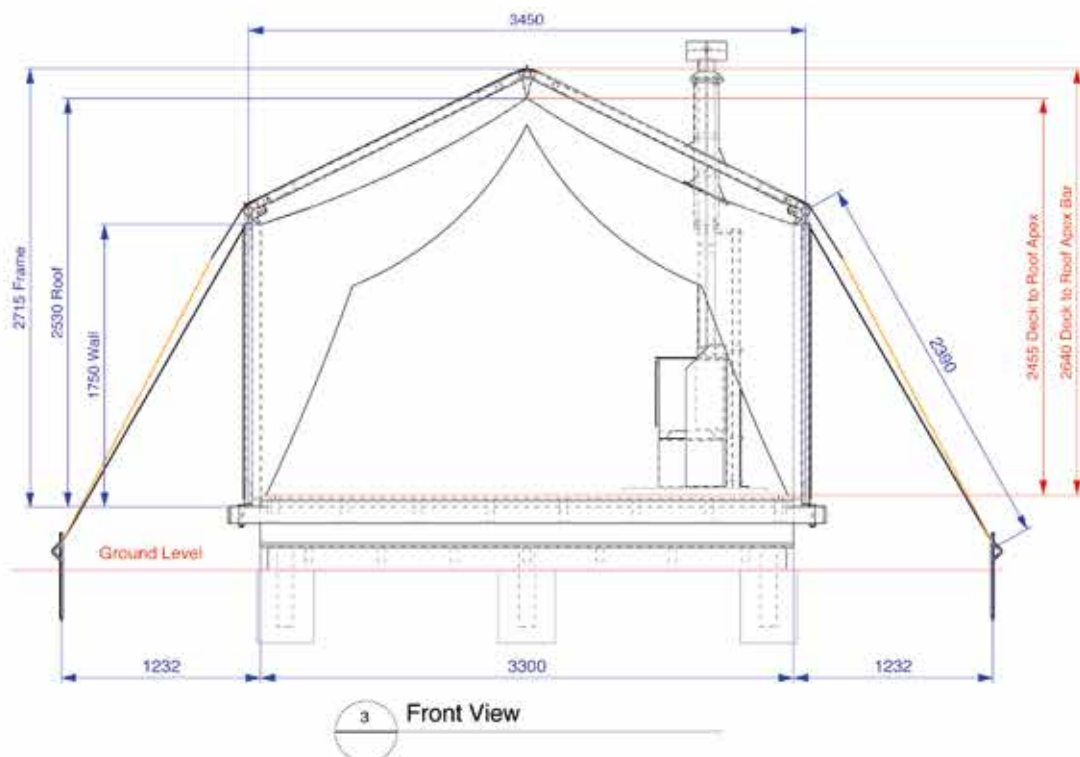
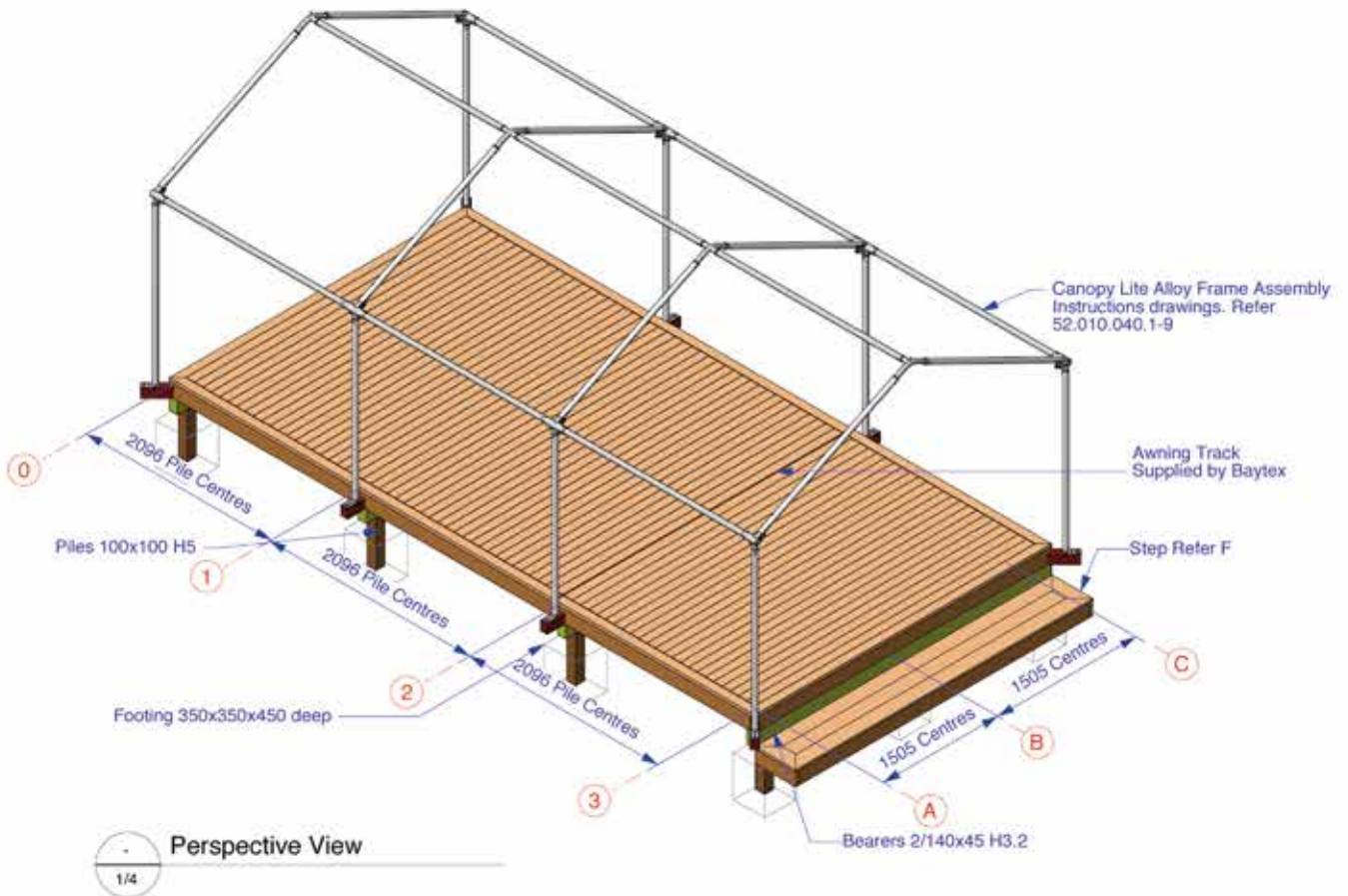
Specifications	
Size	Tent: 3.5m x 4.5m Deck: 3.5m x 6.5m
Materials	Tent: Canvas DX12 Dynaproofed: 505g/sqm (14.9 oz) Fire Retardant  Windows: PVC Mesh Weather Hex Outdoor Fly: Ferrari Stamoid 6002-10387 Off-White PVC Polystar PVC Beige - Fire Retardant
FR Certificates	Glamping tent fabrics have been tested to AS 1530: Pt 2 & Pt 3 by an independent testing laboratory and comply with the requirements of NZ Building Code C3: AS1 as a Flame Retardant Fabric
Warranty	Manufacturers: 2 years on Frame and Workmanship Canvas Fabric: 5 years manufacturers pro rata warranty Fly: 5 years manufacturers pro rata warranty
Maintenance	Washing of canvas and PVC annually Reproofing of canvas biannually
Supplied	<ul style="list-style-type: none"><li>• Fabric: Main Tent (Canvas), Fly (PVC)</li><li>• Frame: NZ Made quick-fit together 6061 T6 Alloy parts (hire insustry quality). HD electrogalvanised steel connectors</li><li>• Guy Straps • Tent Fasteners</li></ul>
Optional Extras	<ul style="list-style-type: none"><li>• Fireplace with Heat Shield and Weather Flashings</li><li>• Insulated Main Tent</li><li>• Drop-down 'clear' Verandah Wind-Break Screens</li></ul>







# Perspective & Elevation





# Price Guide

Prices as of November 2018

## Canopy Lite

### Fabric:

- Main Tent (Canvas)
- Fly (PVC)
- Alloy Frame & Steel Connectors
- Guying Straps & Earth Anchors
- Tent Fasteners
- Building Plans for Frame & Deck

**\$10,964 + GST**

Fireplace: see page 21 for options

### Front Walling (2 Sides):

- Clear PVC
- Plain

**\$964 + GST**  
**\$916 + GST**

### Installation:

- Customer is required to build the Tent Frame and Deck (See Builder Labour Hours below)

**POA**

## Materials Budgets (estimates only - supplier dependent):

### Deck

- Treated Pine Substructure & Pine Decking Top **\$3,000 + GST**

### Or

- Treated Pine Substructure & Kwila Decking Top **\$5,500 + GST**

## Builder Labour Hours (approx. 1 week with 2 people):

Timber Tent Frame (2 People)	- 2 days
Timber Deck (2 People)	- 2 days
Tent Installation (2 People)	- 1 day

# Canopy Pole

The **Canopy Pole** Glamping Tent is a luxury 4m x 6m canvas, wooden-framed (logs) tent and 5.5m x 8.5m canvas fly with timber decking.

The **Canopy Pole** is very similar to the **Canopy Deluxe** but features an all-in-one roof and walls supported by an external wooden log framework which enables it's 'rustic' look 'n feel and allows the tent to blend seamlessly into forest / bush settings. Some of the key design features are the minimised guying at the front outdoor space, the solar view mesh windows with internal zipped canvas, protective canvas rub pockets and straps where the fabric connects to the framing and PVC patches at load points and cut outs.

## Specifications

### Size

Tent: 4m x 6m

Deck: 4m x 8m

### Materials

Tent: Canvas - DX12 Dynaproofed: 505g/sqm (14.9 oz)  
Fire Retardant

Windows: PVC Mesh Weather Hex Outdoor

Fly: Ferrari Stamoid 6002-10387 Off-White PVC  
Polystar PVC Beige - Fire Retardant

### FR Certificates

Glamping tent fabrics have been tested to AS 1530: Pt 2 & Pt 3 by an independent testing laboratory and comply with the requirements of NZ Building Code C3: AS1 as a Flame Retardant Fabric

### Warranty

Manufacturers: 2 years on workmanship

Canvas Fabric: 5 years manufacturers pro rata warranty

Fly: 5 years manufacturers pro rata warranty

### Maintenance

Washing of canvas and PVC annually

Reproofing of canvas biannually

### Supplied

- Fabric: Main Tent (Canvas), Fly (PVC)
- Guy Straps
- Tent Fasteners

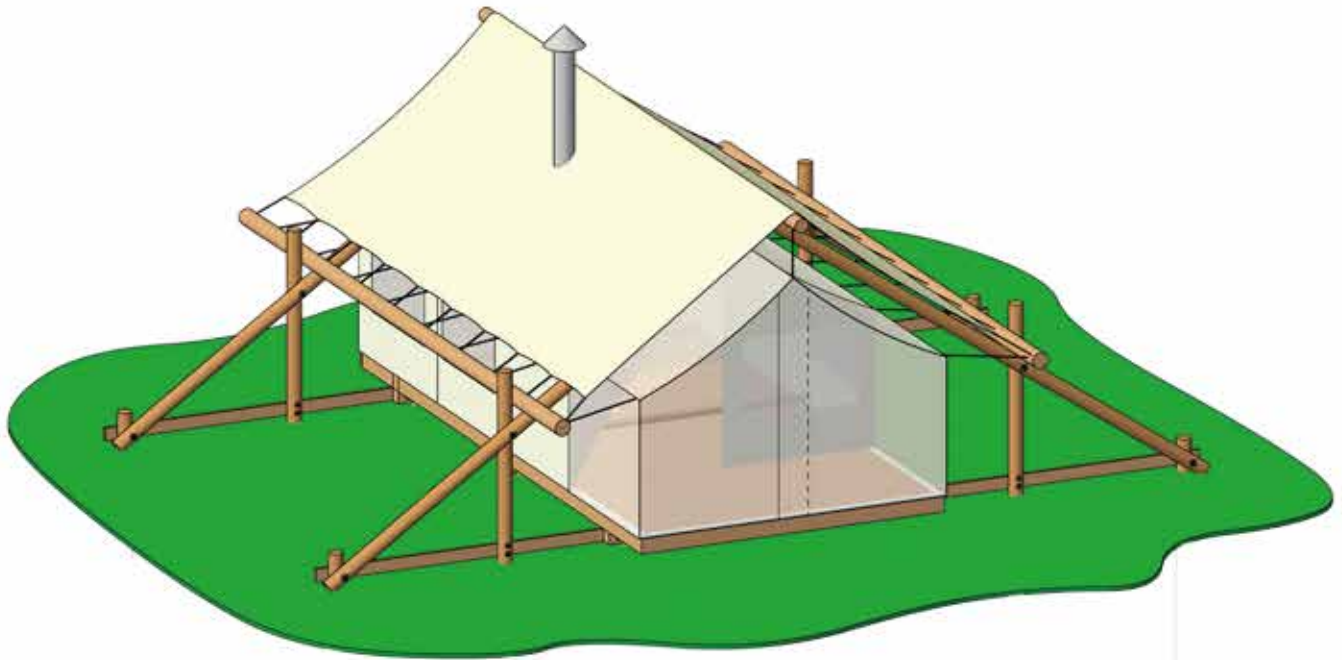
### Optional Extras

- Fireplace with Heat Shield and Weather Flashings
- Insulated Main Tent
- Drop-down 'clear' Verandah Wind-Break Screens

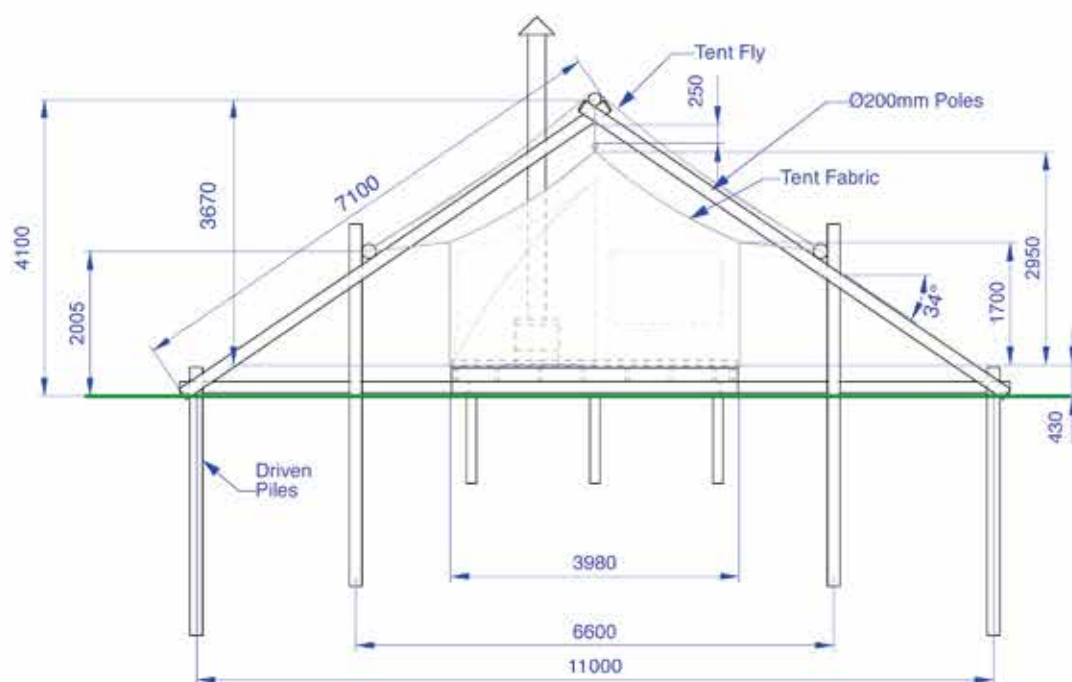




# Perspective & Elevation



010/4 Perspective



010/3 End View



# Price Guide

Prices as of November 2018

## Canopy Pole

### Fabric:

- Main Tent (Canvas)
- Fly (PVC)  
with tension straps & tube
- Tent Fasteners
- Building Plans for Frame & Deck

\$7,290 + GST

Fireplace: see page 21 for options

Verandah Front (Roof & Sides) - Netting

\$805 + GST

### Installation:

- Customer is required to build the Tent Frame and Deck (See Builder Labour Hours below)

POA

## Materials Budgets (estimates only - supplier dependent):

### Tent Frame

- Pine

\$1,000 + GST

### Deck

Or

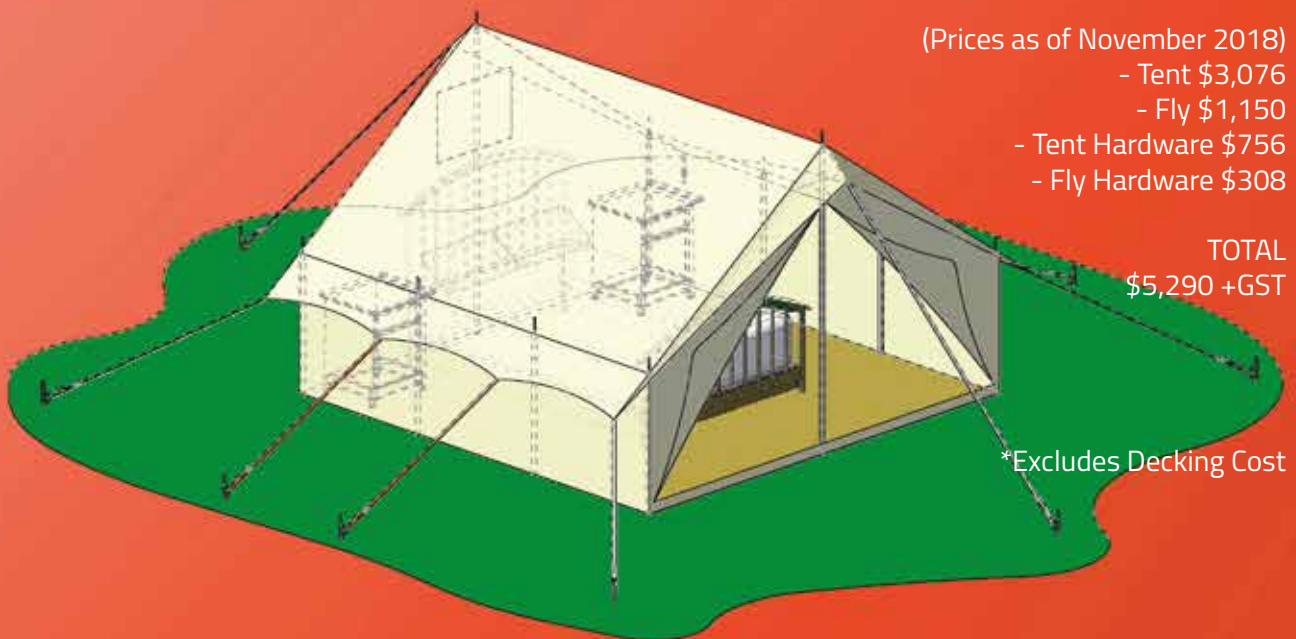
- Treated Pine Substructure & Pine Decking Top \$3,000 + GST
- Treated Pine Substructure & Kwila Decking Top \$5,500 + GST

## Builder Labour Hours (approx. 1 week with 2 people):

- Timber Tent Frame (2 People) - 2 days
- Timber Deck (2 People) - 2 days
- Tent Installation (2 People) - 1 day

# Canopy Sleeper

The 'Canopy Sleeper' is designed as a smaller and more economical alternative to the 'Canopy Deluxe' and 'Canopy Pole' whilst retaining the Baytex Glamping Tent 'look & feel' with the canvas main tent, PVC fly and timber flooring / decking. This 3.3m x 3.3m tent easily accommodates a double bed and small furnishings.



## Specifications

Size	Tent: 3.3m x 3.3m    Deck: 3.3m x 5.3m
Materials	<p>Tent: Canvas DX12 Dynaproofed: 505g/sqm (14.9 oz) 90% Fire Retardant</p> <p>Windows: PVC Mesh Weather Hex Outdoor</p> <p>Fly: Ferrari Stamoid 6002-10387 Off-White PVC Polystar PVC Beige - Fire Retardant</p>
FR Certificates	Glamping tent fabrics have been tested to AS 1530: Pt 2 & Pt 3 by an independent testing laboratory and comply with the requirements of NZ Building Code C3: AS1 as a Flame Retardant Fabric
Warranty	<p>Manufacturers: 2 years on workmanship</p> <p>Canvas Fabric: 5 years manufacturers pro rata warranty</p> <p>Fly: 5 years manufacturers pro rata warranty</p>
Maintenance	<p>Washing of canvas and PVC annually</p> <p>Reproofing of canvas biannually</p>
Supplied	<ul style="list-style-type: none"> <li>• Fabric: Main Tent (Canvas), Fly (PVC)</li> <li>• Tent Poles • Guy Straps • Earth Anchors</li> <li>• Tent Fasteners</li> </ul>



# Canopy Pup

The 'Canopy Pup' is the smallest of the Baytex Glamping Tent range and is designed to complement our larger designs as a 'tent for the kids'. The 2.4m x 3.3m 'Canopy Pup' retains the Baytex Glamping Tent 'look & feel' with its canvas main tent, PVC fly and timber flooring / decking and can accommodate 3 single stretchers.

(Prices as of November 2018)

- Tent \$1,860

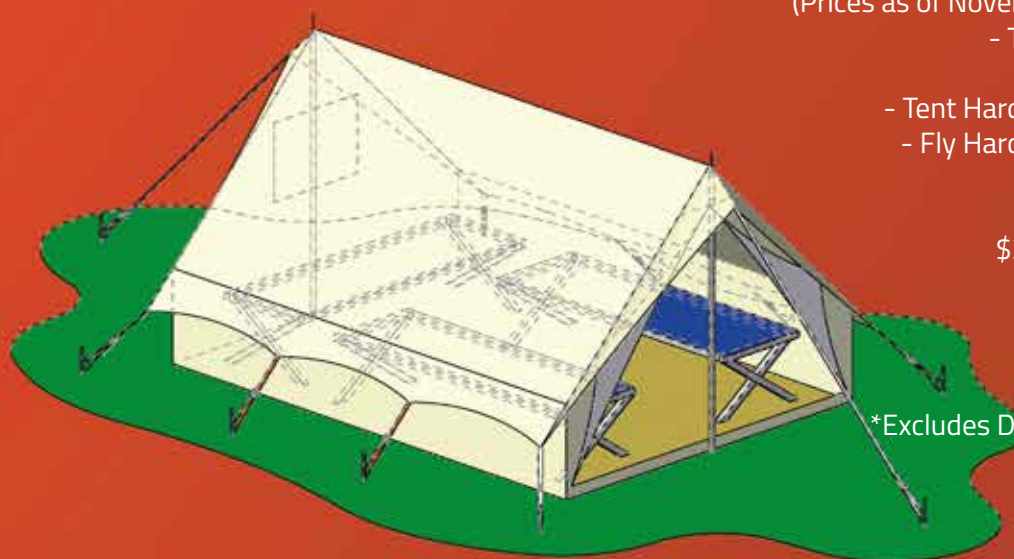
- Fly \$809

- Tent Hardware \$468

- Fly Hardware \$335

TOTAL

\$3,472 +GST



\*Excludes Decking Cost

## Specifications

Size	Tent: 2.4m x 3.3m    Deck: 2.4m x 5.3m
Materials	Tent: Canvas DX12 Dynaproofed: 505g/sqm (14.9 oz) Fire Retardant Windows: PVC Mesh Weather Hex Outdoor Fly: Ferrari Stamoid 6002-10387 Off-White PVC Polystar PVC Beige - Fire Retardant
FR Certificates	Glamping tent fabrics have been tested to AS 1530: Pt 2 & Pt 3 by an independent testing laboratory and comply with the requirements of NZ Building Code C3: AS1 as a Flame Retardant Fabric
Warranty	Manufacturers: 2 years on workmanship Canvas Fabric: 5 years manufacturers pro rata warranty Fly: 5 years manufacturers pro rata warranty
Maintenance	Washing of canvas and PVC annually Reproofing of canvas biannually
Supplied	• Fabric: Main Tent (Canvas), Fly (PVC) • Tent Poles • Guy Straps • Earth Anchors • Tent Fasteners



# Custom Design

## Custom Design Philosophy:

With a long history of custom structure design and manufacture, the Baytex team is no stranger to challenges. Creativity and flair are combined with hard-nosed practicality to ensure that clients get a unique look and performance for their special project.

## Custom Design Brief:

Baytex is committed to delivering completed projects that are within time, to set quality standards and within the finally agreed budgets, as compiled through our qualified Project Management Process. Particular attention is paid to the consultation aspect of this process, between Project Managers, Stake Holders and Interest Groups.

## Company Resources:

Purpose-built 2,500 sq. metre factory, fully equipped to handle a wide range of technical fabrics, from the lightest polyesters to the heaviest PVC's & Canvases.

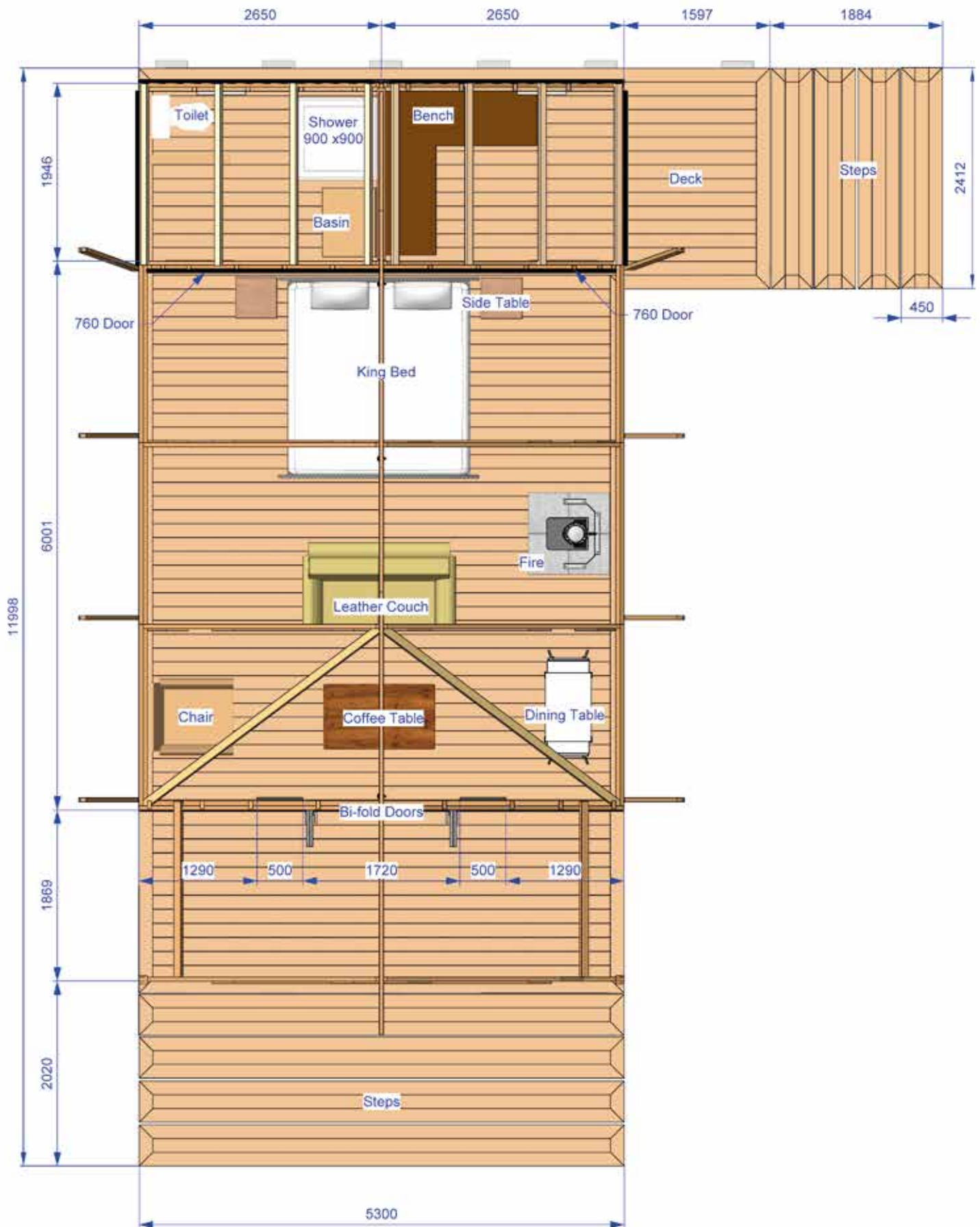
- Range of modern, powerful high-frequency welders
- Comprehensive range of modern industrial sewing machinery
- State-of-the-art, wide-beam, multi-head plotter/cutter
- Powerful 3D CAD system with form-finding and pattern-generating capability
- Comprehensive range of modern industrial sewing machinery
- 30+ full time staff including more than 20 skilled production personnel
- In-house Engineering Department
- Customer Support / After-sales Support

Please visit [www.baytex.co.nz](http://www.baytex.co.nz) for further company information



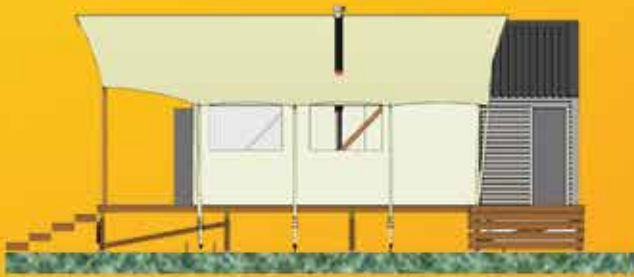
• *Simplicity* • *Performance* • *Style*

# Custom Design (Upscaled Canopy Deluxe)





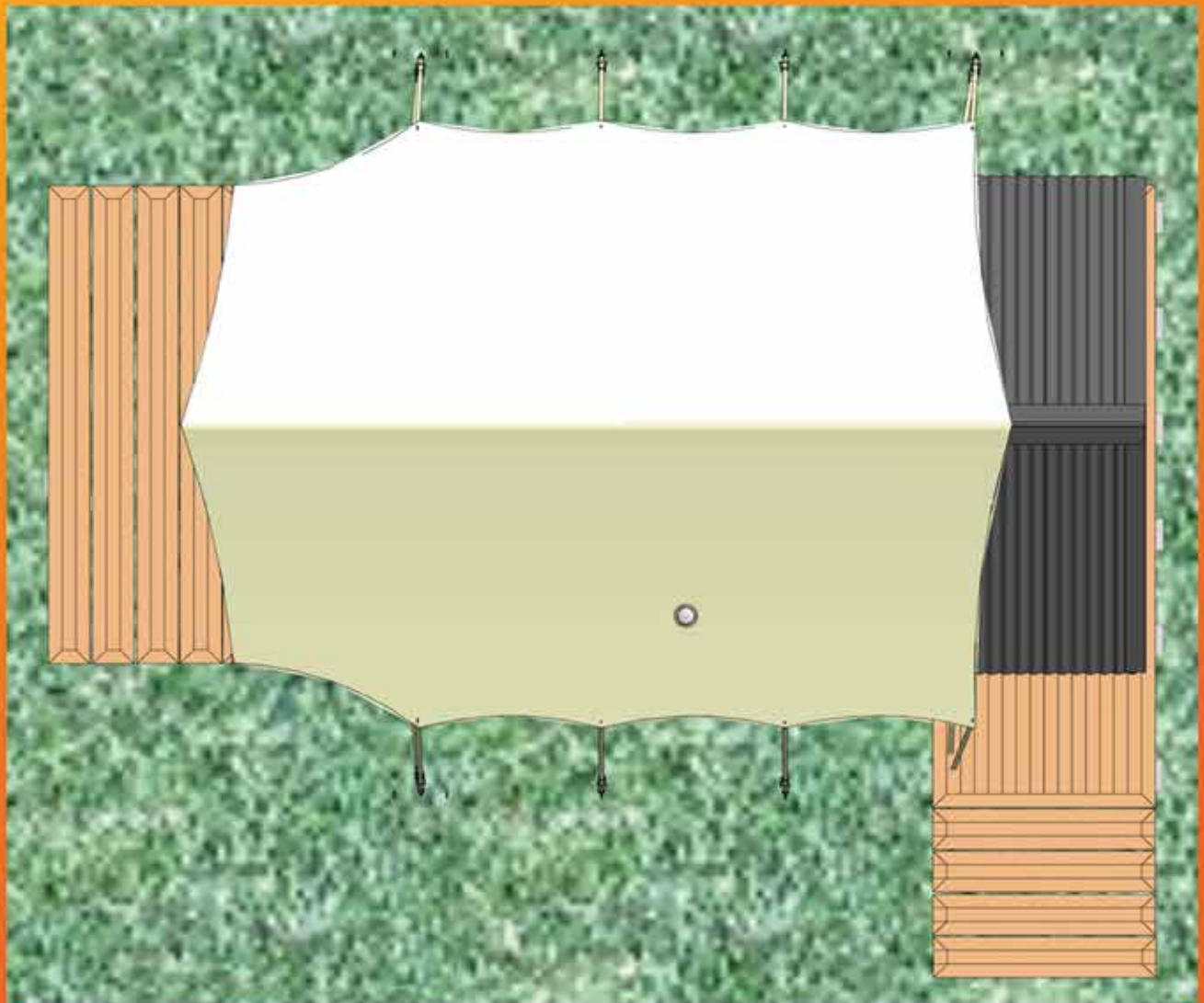
# Custom Design (Upscaled Canopy Deluxe)



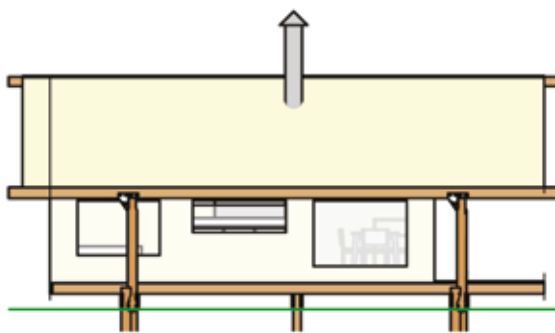
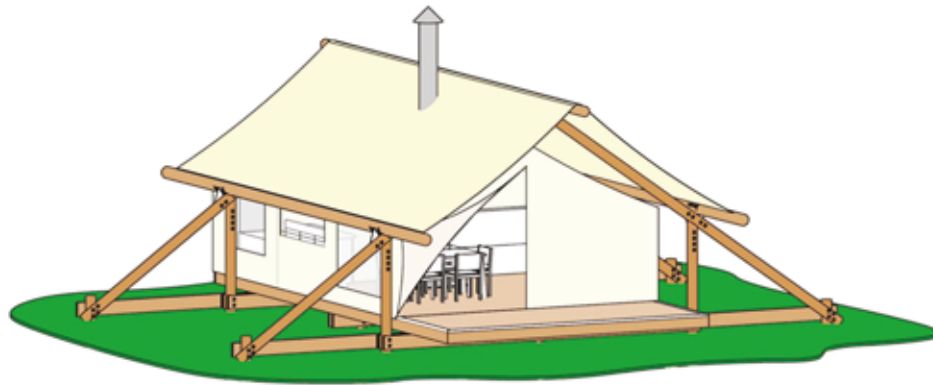
North View



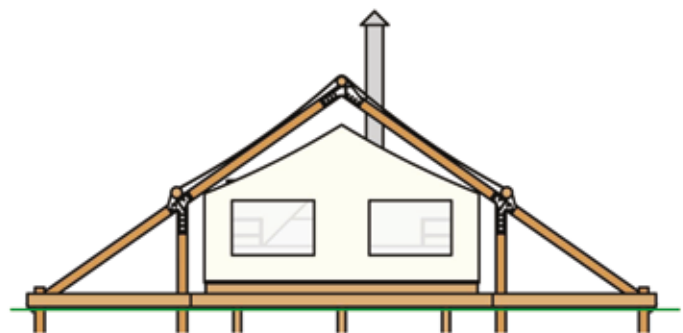
South View



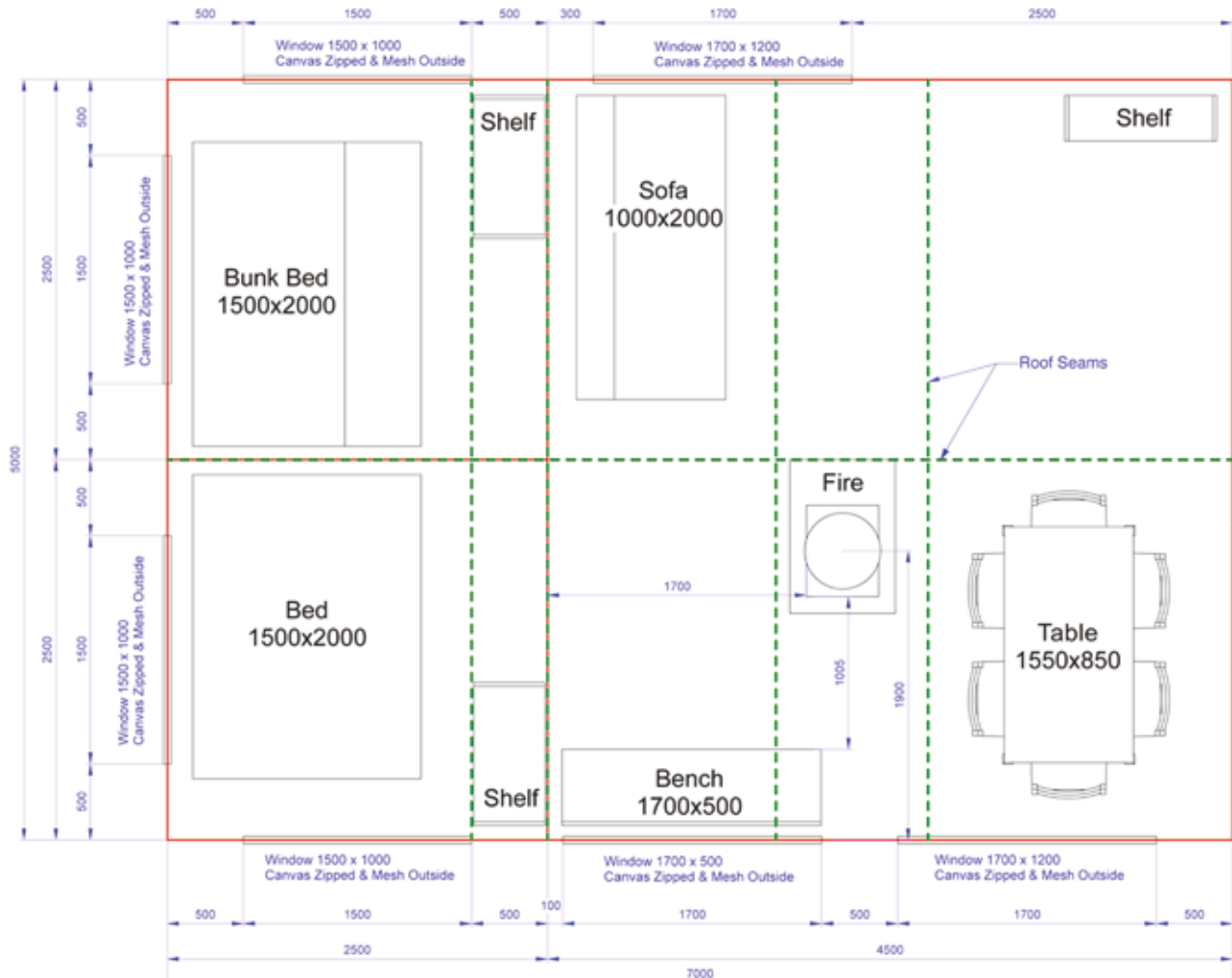
# Custom Design (Upscaled Canopy Pole)



026/2 Left



026/3 Back





# Glamping Accessories

Baytex can offer two great-looking compact high-output fires that generate 7 kws of heat! The Metro LTD Wee Rad is for rural properties over 2 Hectares. The Wagener Sparky is for under 2 Hectares. Both are New Zealand designed and handcrafted using only the best quality materials with a special Hi Temperature paint finish.



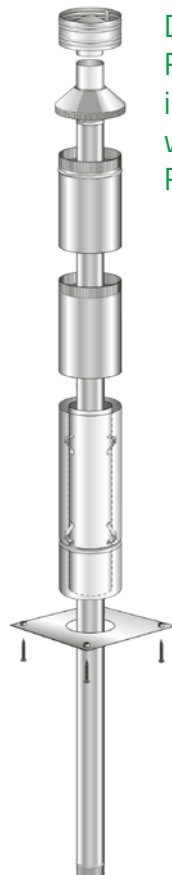
## Metro LTD Wee Rad

for over 2 hectares which is tested and compliant to AS/NZS2918:2001.  
\$2450 +GST



## Wagener Sparky

for under 2 hectares which is tested and compliant to AS/NZS2918:2001.  
\$2675 +GST



Double Skin  
Flue Kit  
included  
with your  
Fireplace



Heat-Shield  
sold separately



**Insulated Main Tent** a double-layered canvas 'Main Tent' option with an eco-friendly 25mm Autex 'Green Stuff', 100% pure polyester insert, is available to clients looking for that extra comfort needed in cold environments.



**Baytex Earth Anchors** are a revolutionary new anchoring system for 'fixing' objects to the ground. Lightweight and reuseable, they offer heavy-duty load handling with minimum effort and come in many sizes from 230mm - 1200mm. Compared to conventional staking methods, the distinctive design of the Earth Anchor boasts impressive holding power and ease of use.



**Clear Walling** options are offered for our Canopy Deluxe and Canopy Lite range which gives the ability to offer weather protection for the verandah/extended fly area and provides extra tent space when required, without encroaching on the outlook of the tent when not.



**Mesh Walling** is offered as an option for our Canopy Deluxe, Canopy Lite & Canopy Pole to provide protection from bugs and creepy crawlies in those locations that require it. The mesh provides a barrier between the outside and the verandah/extended fly area.



# Glamping Tents by:



52 Newton Street  
PO Box 4370  
Mount Maunganui 3149  
New Zealand

P: +64 7 579 0190  
F: +64 7 579 0194  
E: [info@baytex.co.nz](mailto:info@baytex.co.nz)